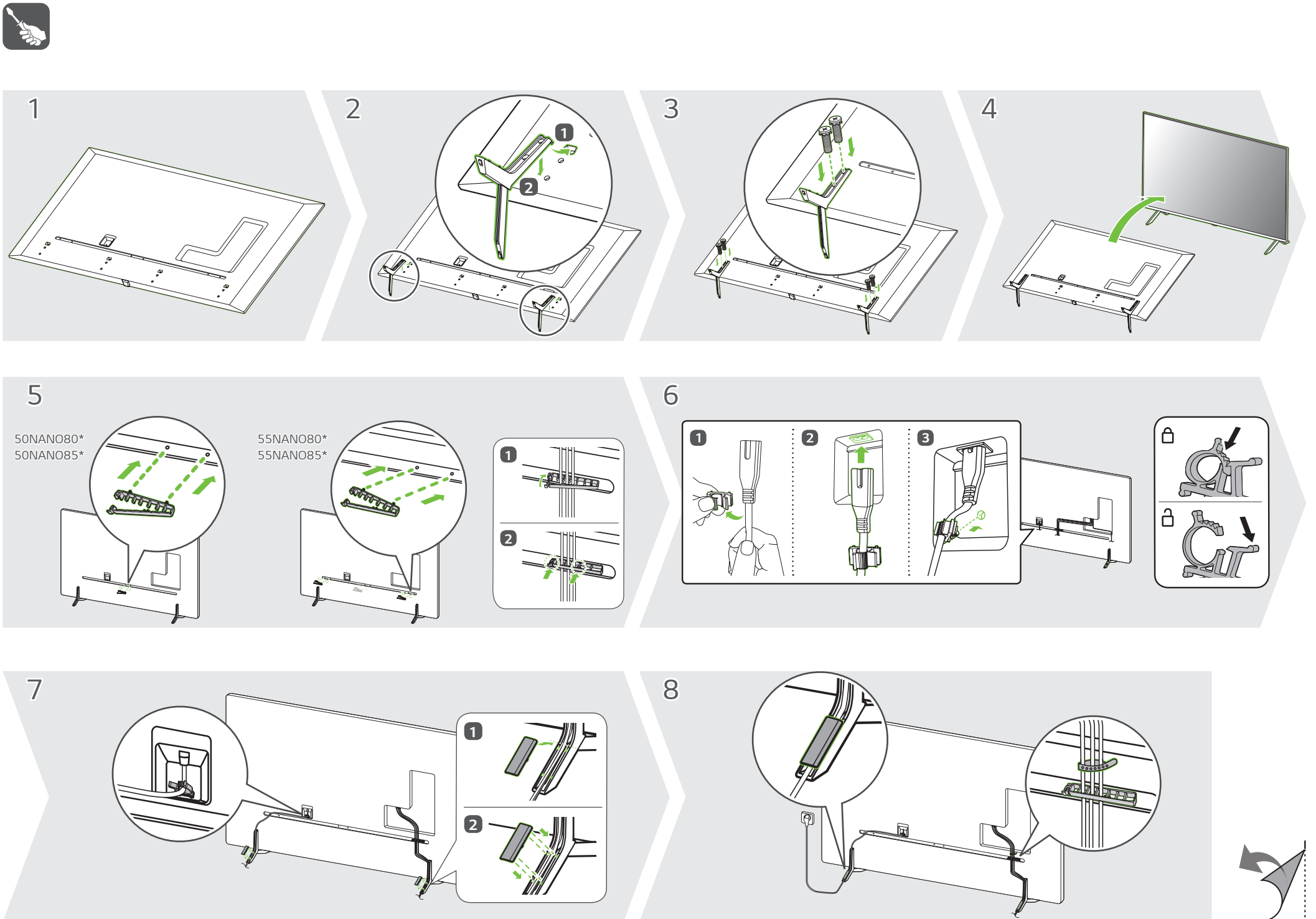
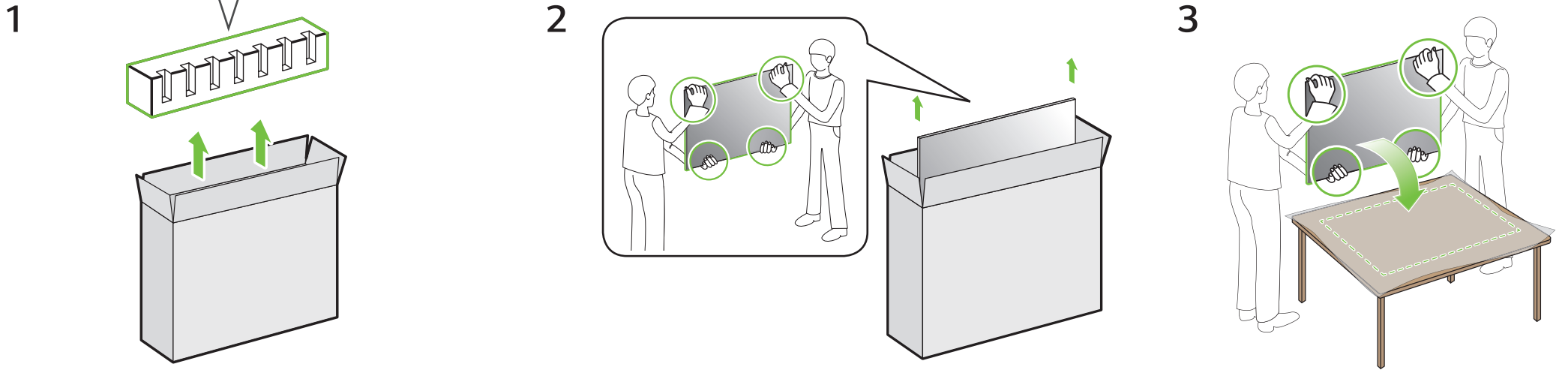
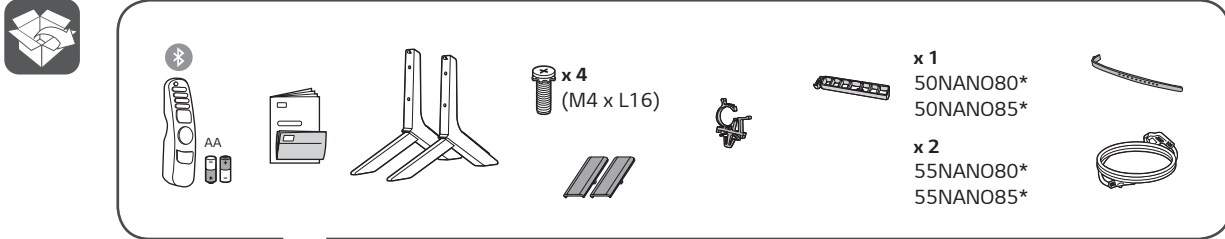
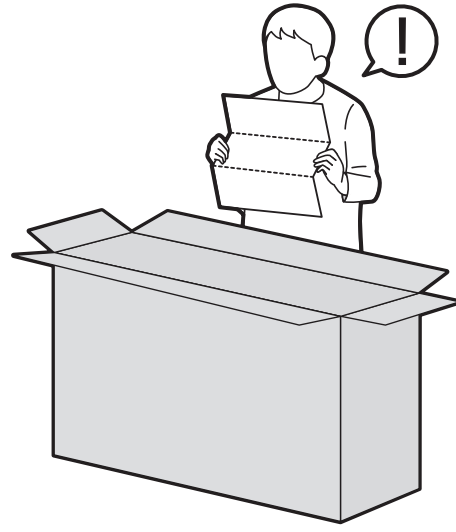
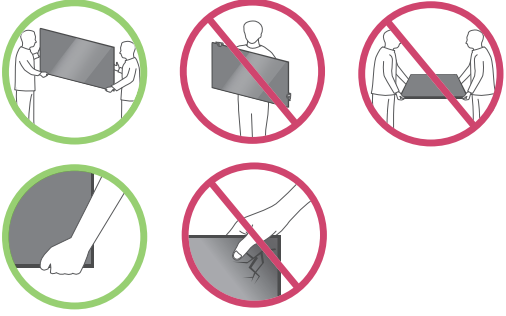
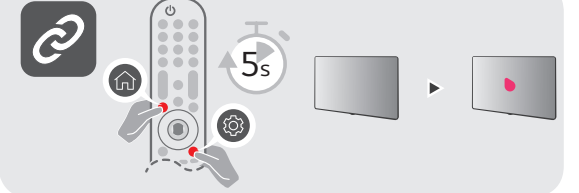
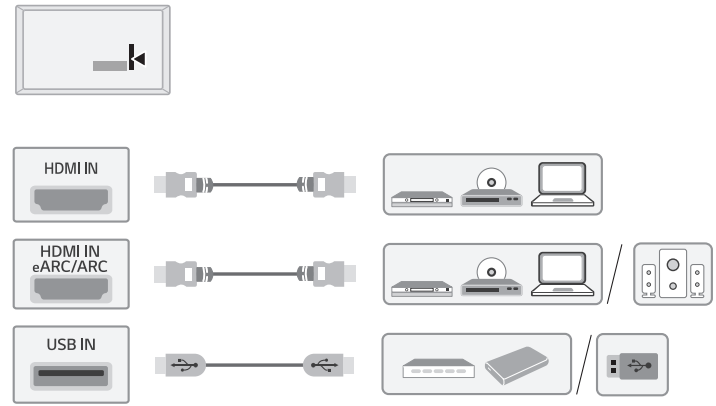
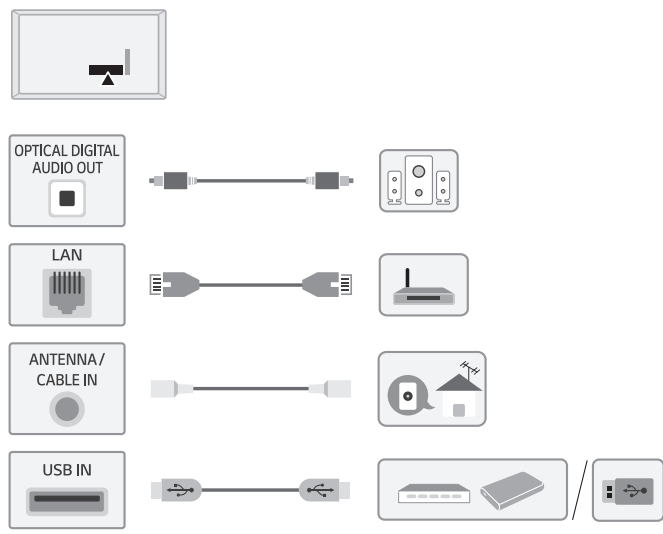
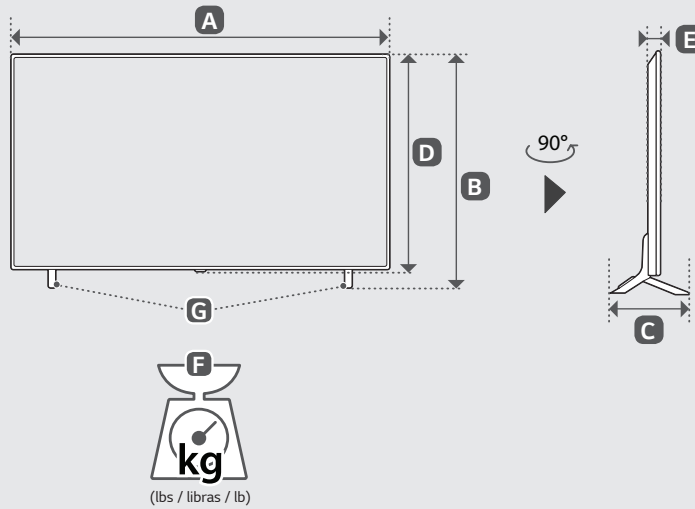


50NANO80UPA 55NANO80UPA
50NANO85APA 55NANO85APA





A, B, C, D, E : mm (inches / pulgadas / po)
F, G : kg (lbs / libras / lb)



MODELS	A		B		C		D		E		F		F-G		Power consumption
MODELOS	A		B		C		D		E		F		F-G		Consumo de potencia
MODÈLES	A		B		C		D		E		F		F-G		Consommation électrique
50NANO80UPA 50NANO85SAPA	1,120 (44,0)	1 120 (44,0)	718 (28,2)	718 (28,2)	257 (10,1)	257 (10,1)	653 (25,7)	653 (25,7)	49,2 (1,9)	49,2 (1,9)	14,4 (31,7)	14,4 (31,7)	14,0 (30,8)	14,0 (30,8)	135 W
55NANO80UPA 55NANO85SAPA	1,233 (48,5)	1 233 (48,5)	781 (30,7)	781 (30,7)	257 (10,1)	257 (10,1)	716 (28,1)	716 (28,1)	44,2 (1,7)	44,2 (1,7)	16,7 (36,8)	16,7 (36,8)	16,3 (35,9)	16,3 (35,9)	165 W
Power requirement / Alimentación requerida / Alimentation										AC 120 V- 50/60 Hz					



ENGLISH Read **Safety and Reference**.
ESPAÑOL Leer **Seguridad y Consultas**.
FRANÇAIS Lisez **Sécurité et références**.

ENGLISH
Easy Setup Guide
Please read this manual carefully before operating your set and retain it for future reference.

ESPAÑOL
Guía Rápida de Configuración
Lea atentamente este manual antes de poner en marcha el equipo y consérvelo para futuras consultas.

FRANÇAIS
Guide de configuration rapide
Avant d'utiliser l'appareil, veuillez lire attentivement ce manuel et le conserver pour pouvoir vous y reporter ultérieurement.

⊕ : Depending upon model / Según el modelo / Selon le modèle