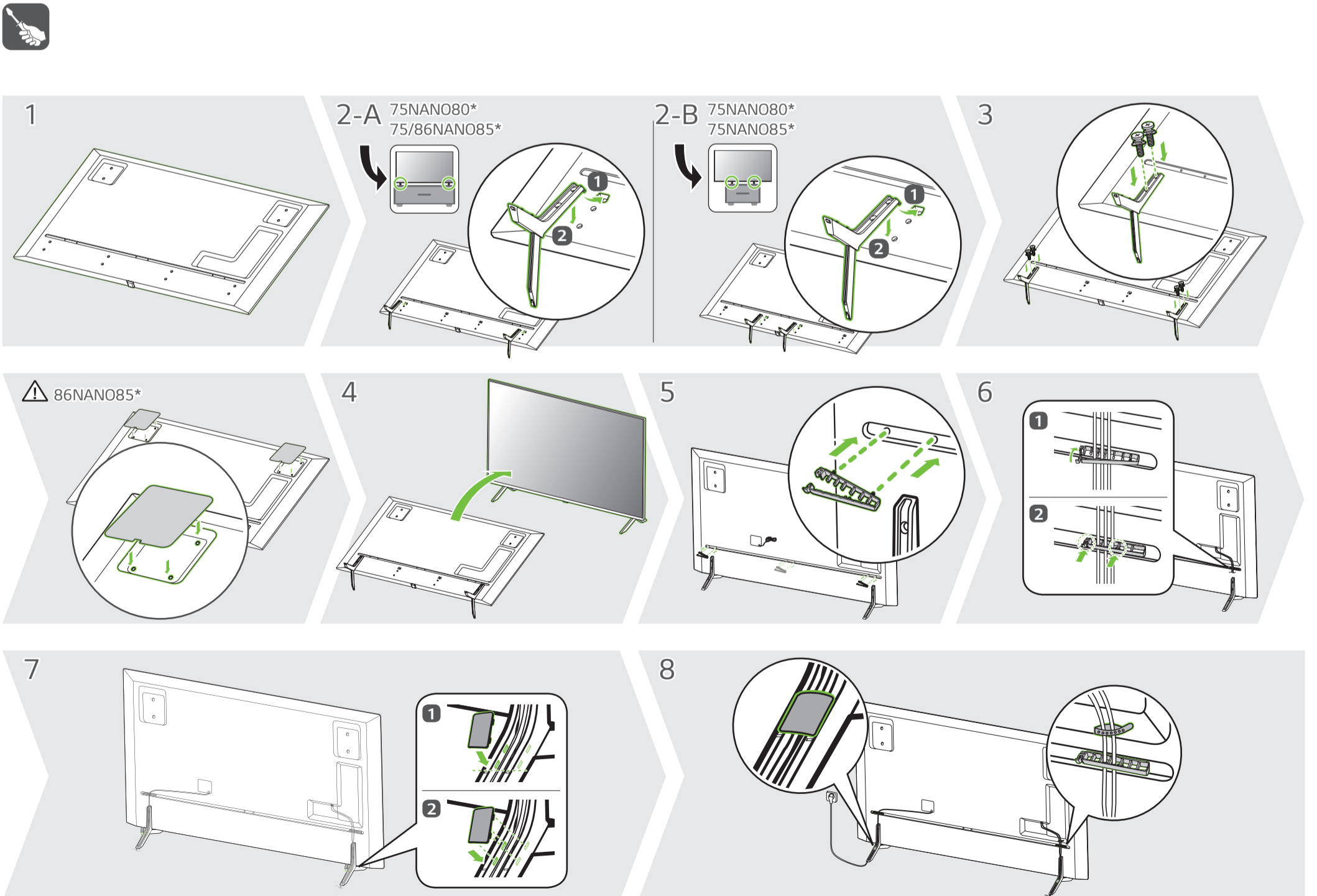
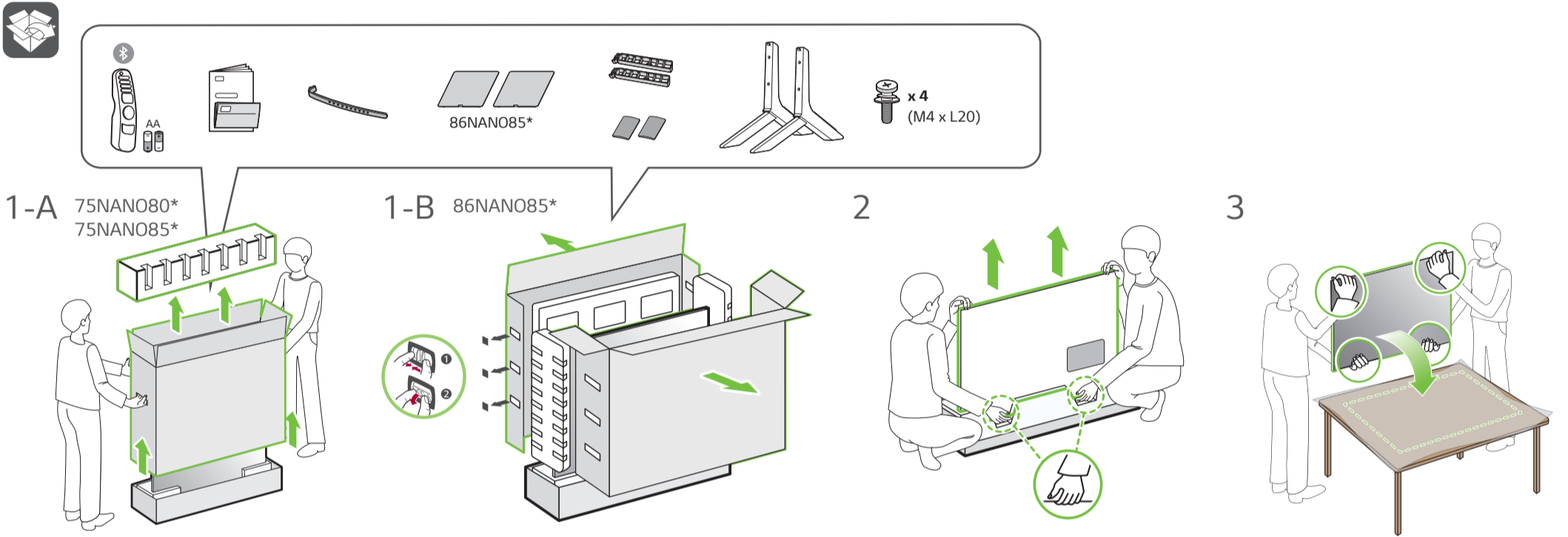
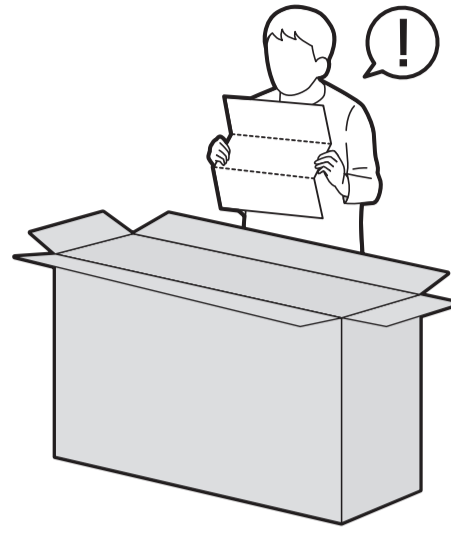
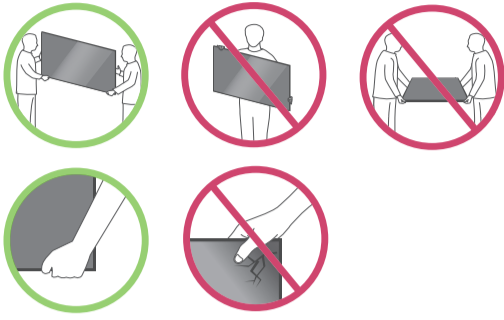
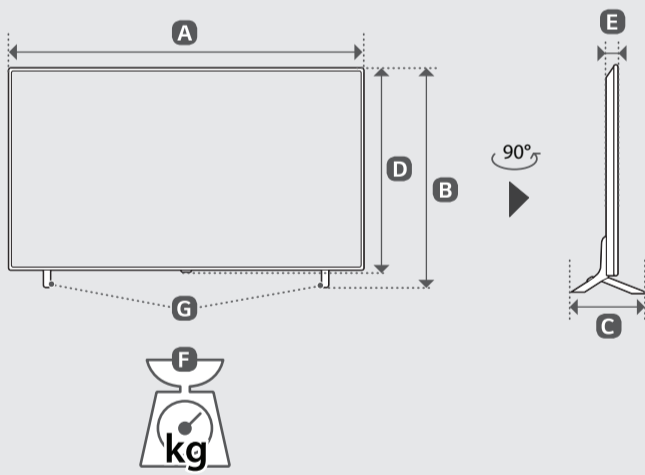
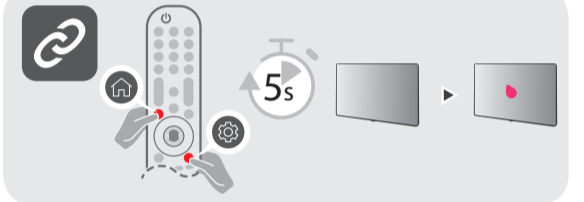
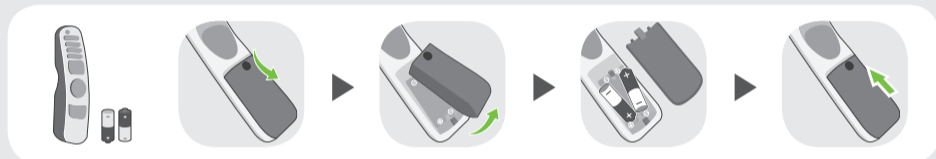
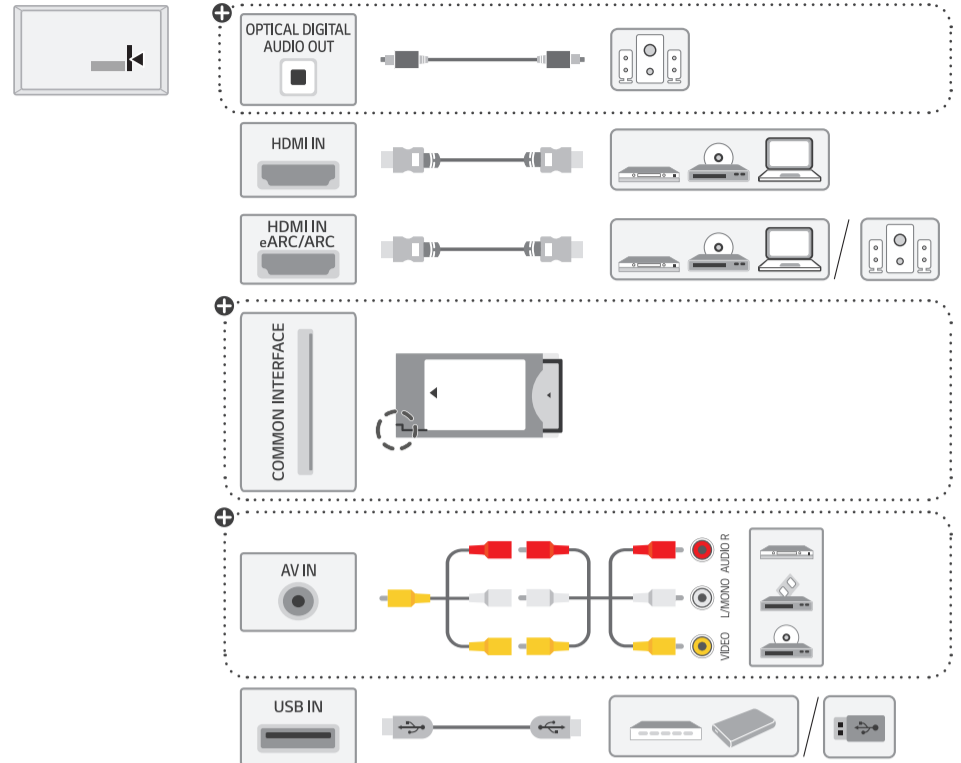
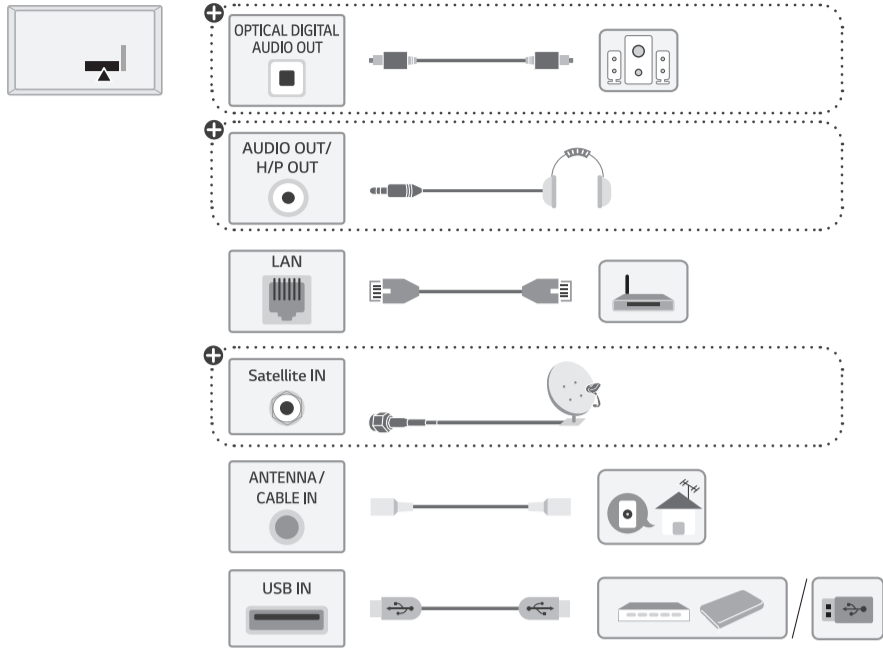


NANO80\*  
NANO85\*





|   | A    | B    | C   | D    | E    | F   | F-G  |
|---|------|------|-----|------|------|---|------|
|   | (mm) |      |     |      |      | (kg)  |      |
| 75NANO80TPA<br>75NANO80VPA<br>75NANO85TPA<br>75NANO85VPA  | 1675 | 1029 | 359 | 964  | 44.5 | 36.9  | 35.9 |
| 86NANO85VPA   | 1925 | 1165 | 359 | 1105 | 46.1 | 55.5  | 54.5 |
| Power requirement / متطلبات الطاقة / Alimentation / Requisito de alimentação / แรงดันและความถี่ไฟฟ้า / Nguồn điện yêu cầu |      |      |     |      |      | AC 100-240 V - 50 / 60 Hz<br>تيار متردد 240-100 فولت ~ 60 / 50 هرتز |      |



English

- Read **Safety and Reference**.
- The Analog Gender adapter can be purchased separately at Customer Service.

• قراءة الأمان والمرجع.  
• يمكن شراء النوع التناظري بشكل منفصل من دعم عملاء LG.

العربية

Français

- Lire le document **Sécurité et référence**.
- L'adaptateur analogique peut être acheté séparément auprès du SAV.

Português

- Consulte o manual **Segurança e referência**.
- O adaptador analógico pode ser comprado em separado no Serviço de Apoio ao Cliente da LG.

ภาษาไทย

- โปรดอ่านคู่มือผู้ใช้**ความปลอดภัยและการอ้างอิง**
- **สายรวมสัญญาณ Component และ AV** สามารถซื้อแยกต่างหากได้ที่ศูนย์บริการของบริษัท

Tiếng Việt

- Đọc phần **An toàn và Tham khảo**.
- Đầu chuyển tín hiệu analog có thể mua riêng tại Trung tâm chăm sóc khách hàng của LG.

⊕ : Depending on model / حسب الطراز / Selon le modèle / Dependendo do modelo / ขึ้นอยู่กับรุ่น / Tùy theo mã sản phẩm